

NCD Update

Why my hope is increasing post-Covid



NCD Update

Why my hope is increasing post-Covid

1. NCD Church Survey uptake has been increasing at 14% per month for 15 months.



NCD Update

Why my hope is increasing post-Covid

1. NCD Church Survey uptake has been increasing at 14% per month for 15 months.
2. We have begun collecting NCD good news stories from around the world to share.



NCD Update

Why my hope is increasing post-Covid

1. NCD Church Survey uptake has been increasing at 14% per month for 15 months.
2. We have begun collecting NCD good news stories from around the world to share.
3. The Inspiration process and the 4-week NCD Inspiration Coach Training is underway to help churches go deeper with Inspiring Worship Service.



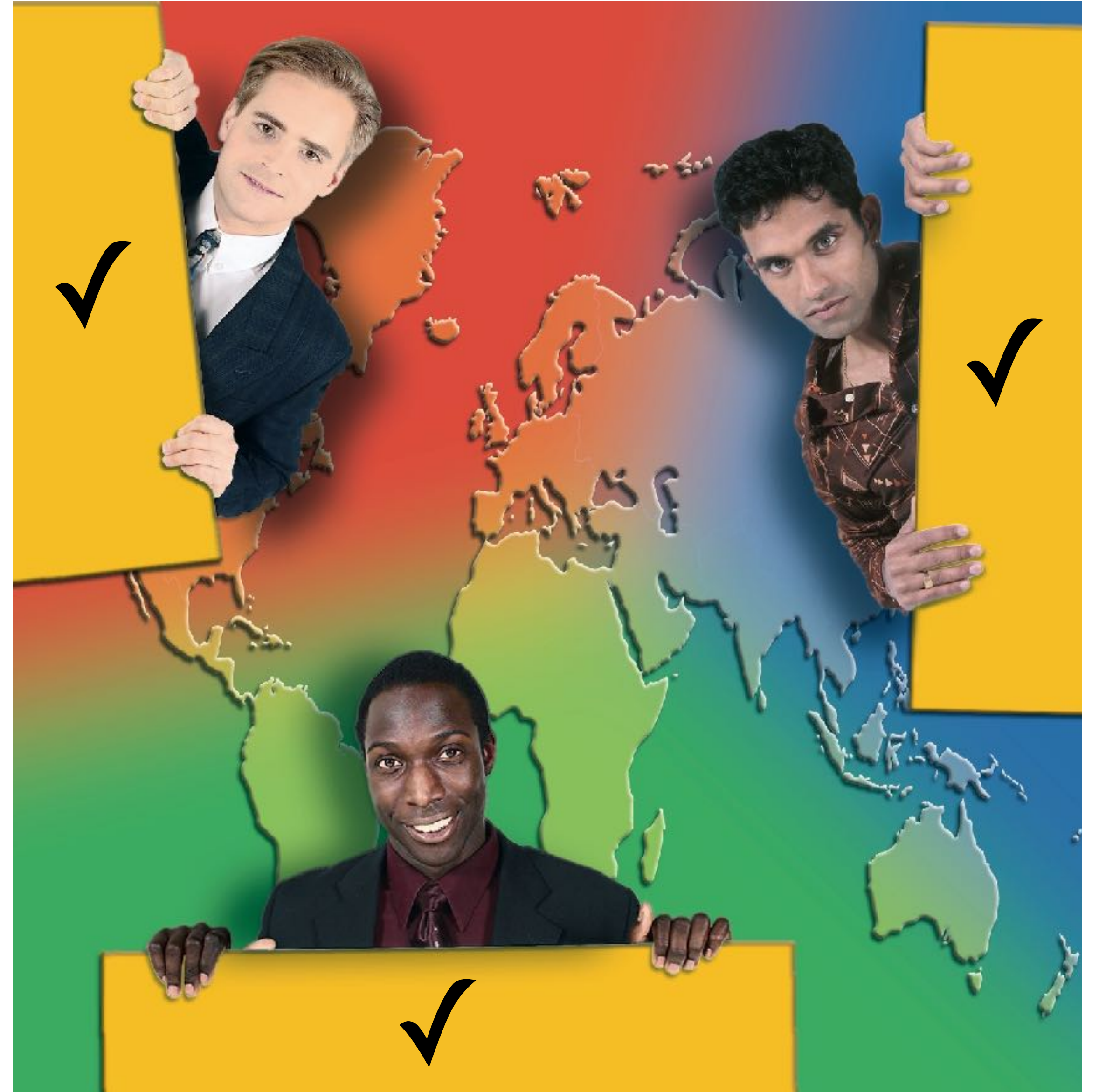
NCD Quality Characteristics: matters of life and death



Adam Johnstone - September 2022

NCD applicability

Everywhere

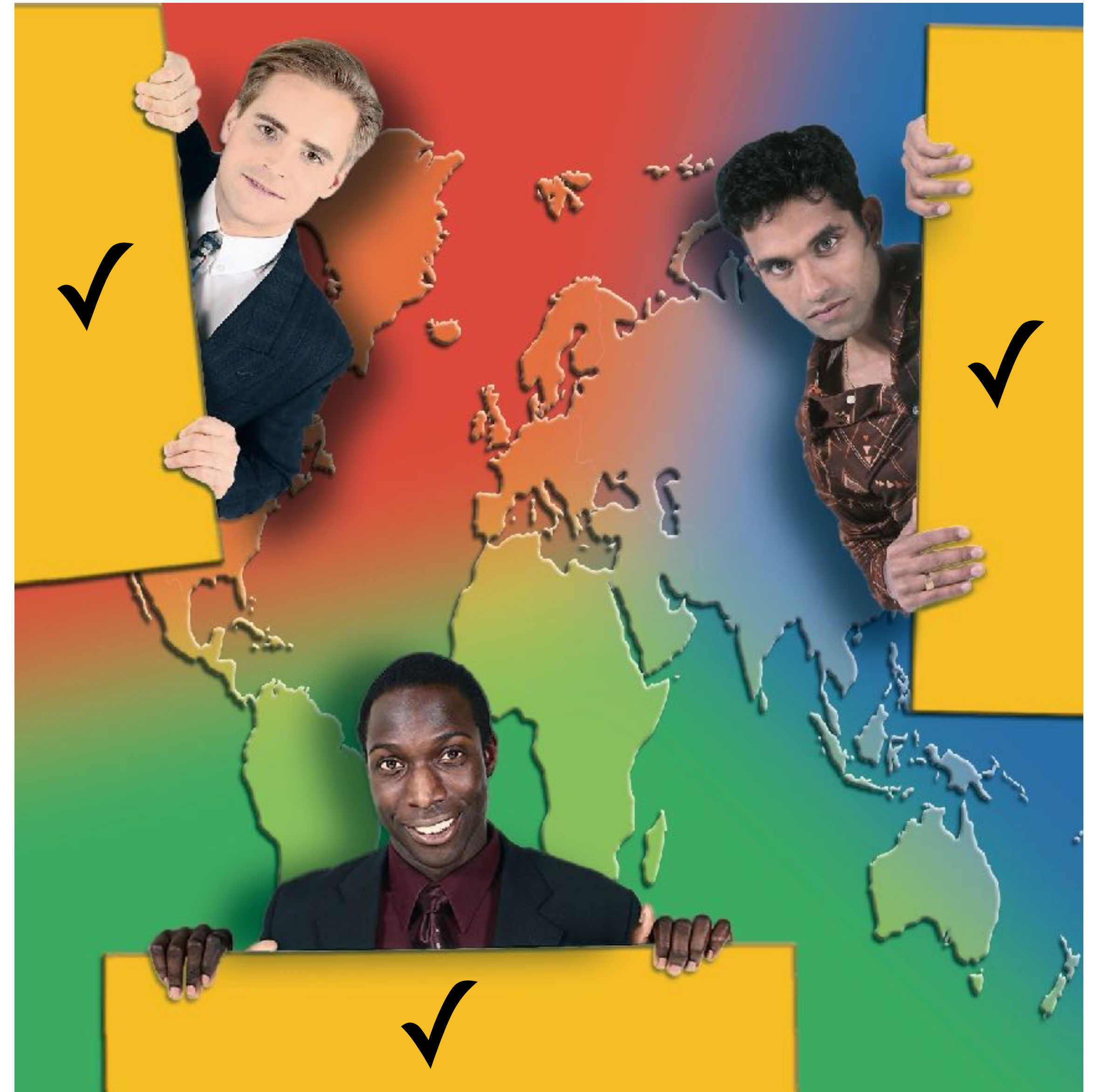


NCD applicability

Everywhere

The widest spectrum of:

- cultures

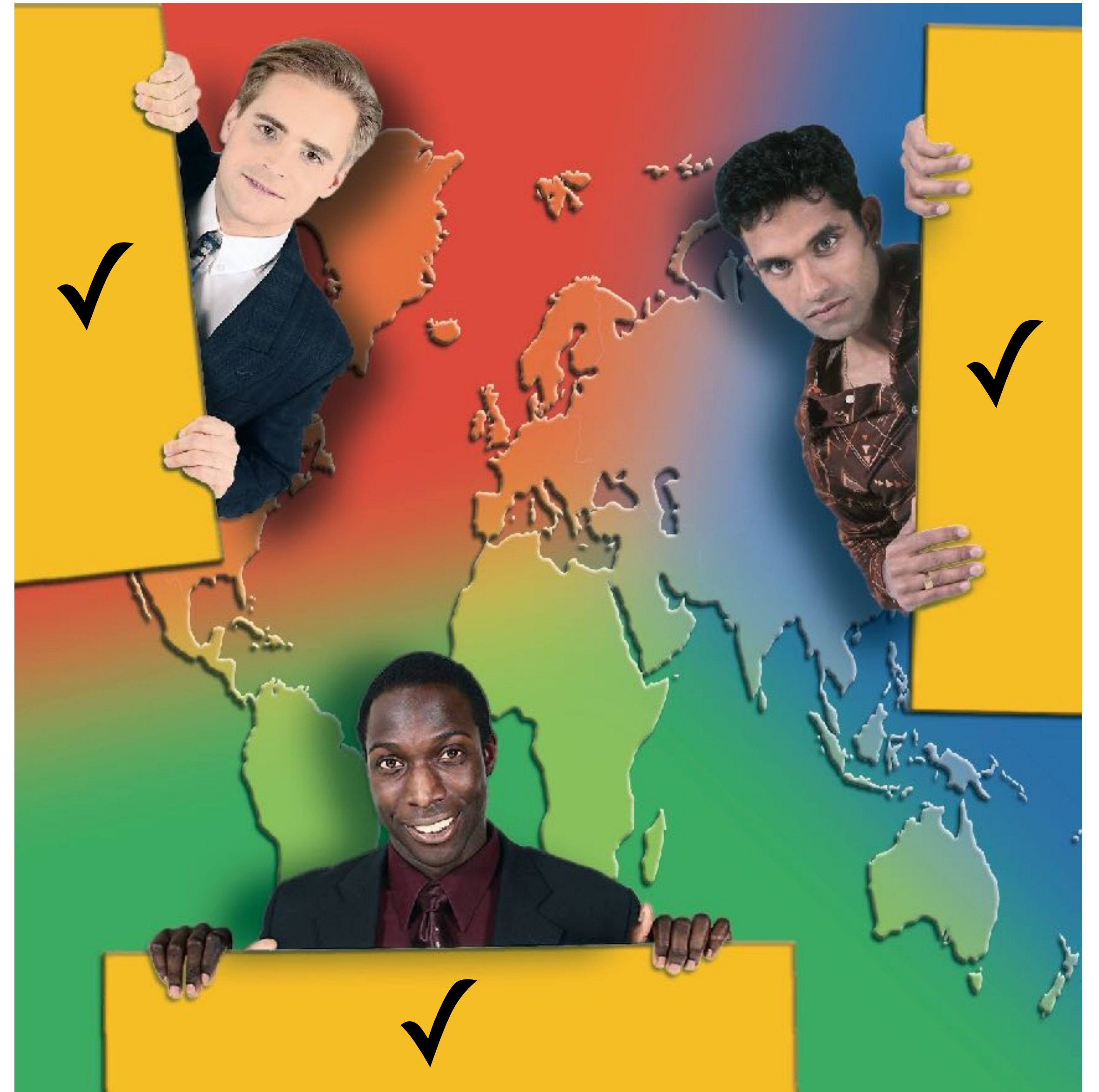


NCD applicability

Everywhere

The widest spectrum of:

- cultures
- denominations

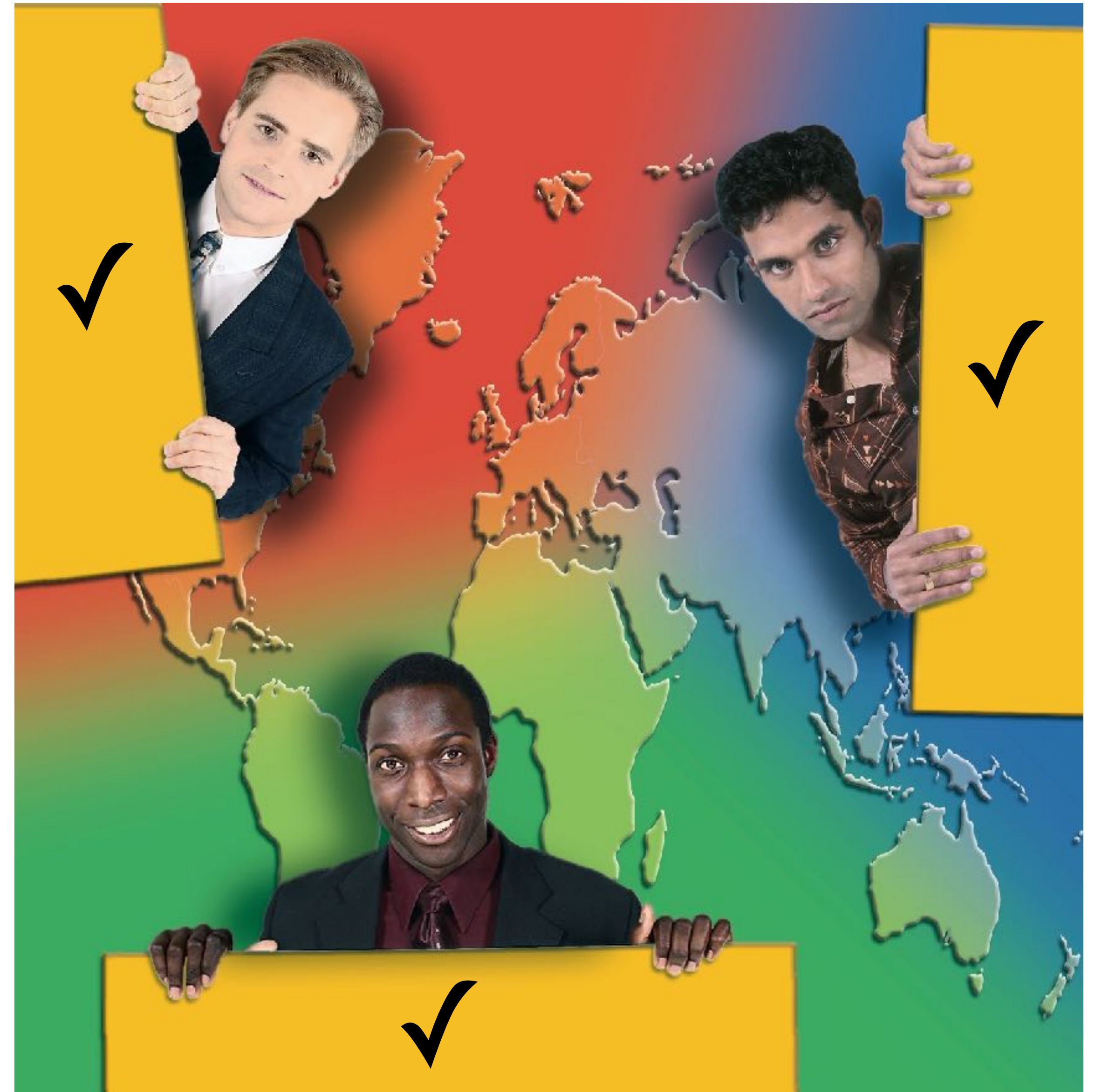


NCD applicability

Everywhere

The widest spectrum of:

- cultures
- denominations
- religious starting points

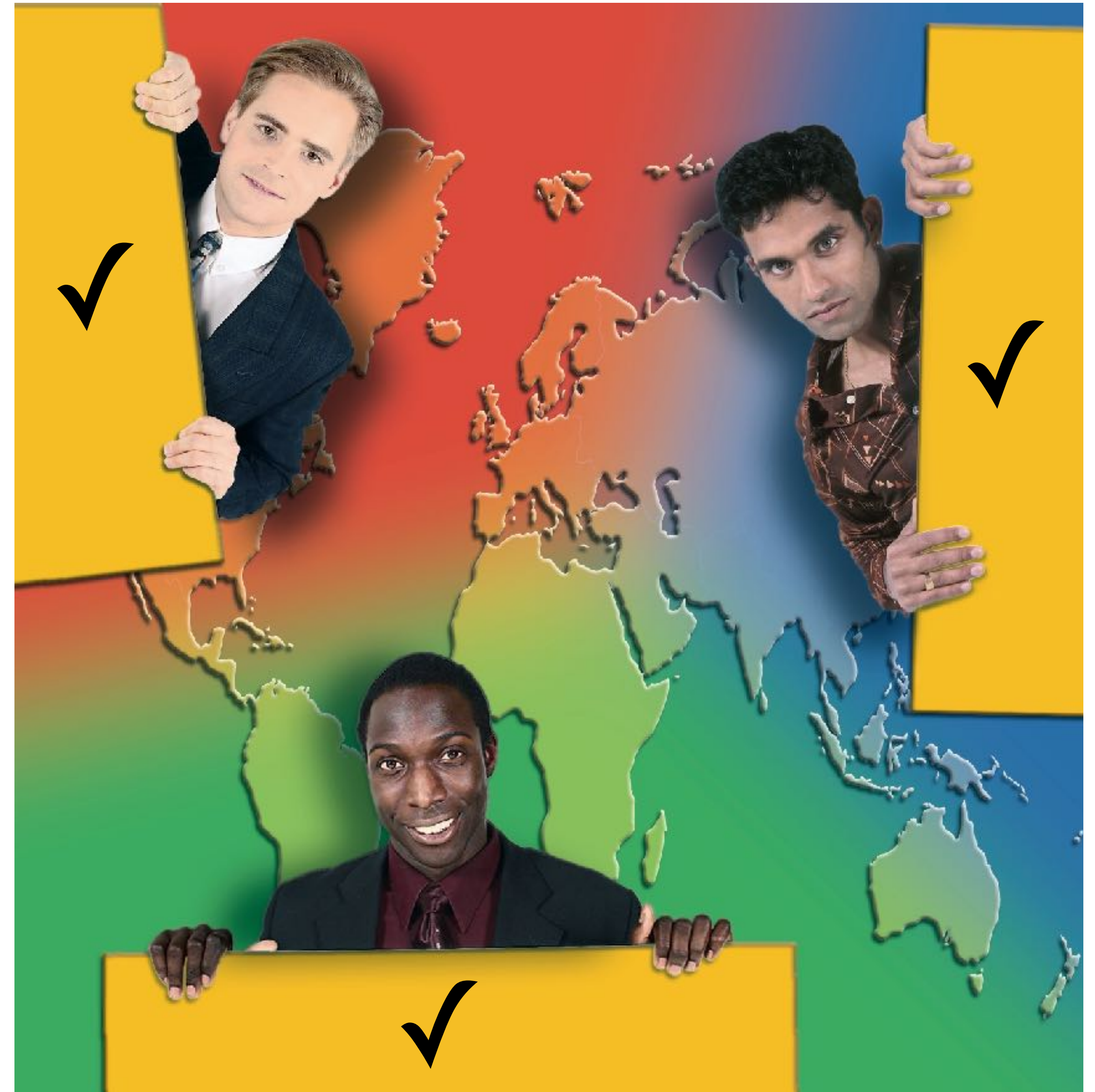


NCD applicability

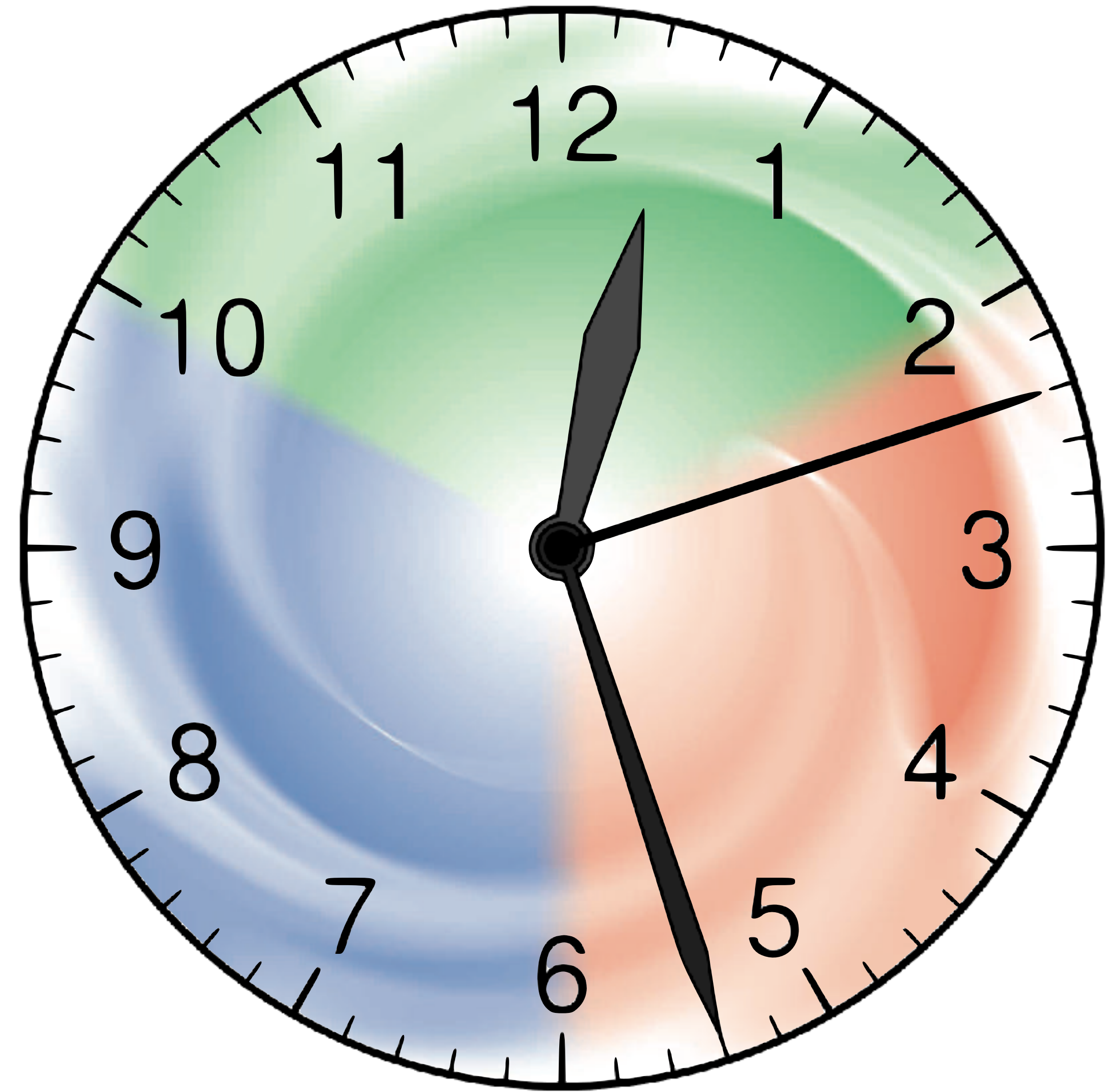
Everywhere

The widest spectrum of:

- cultures
- denominations
- religious starting points
- age groups

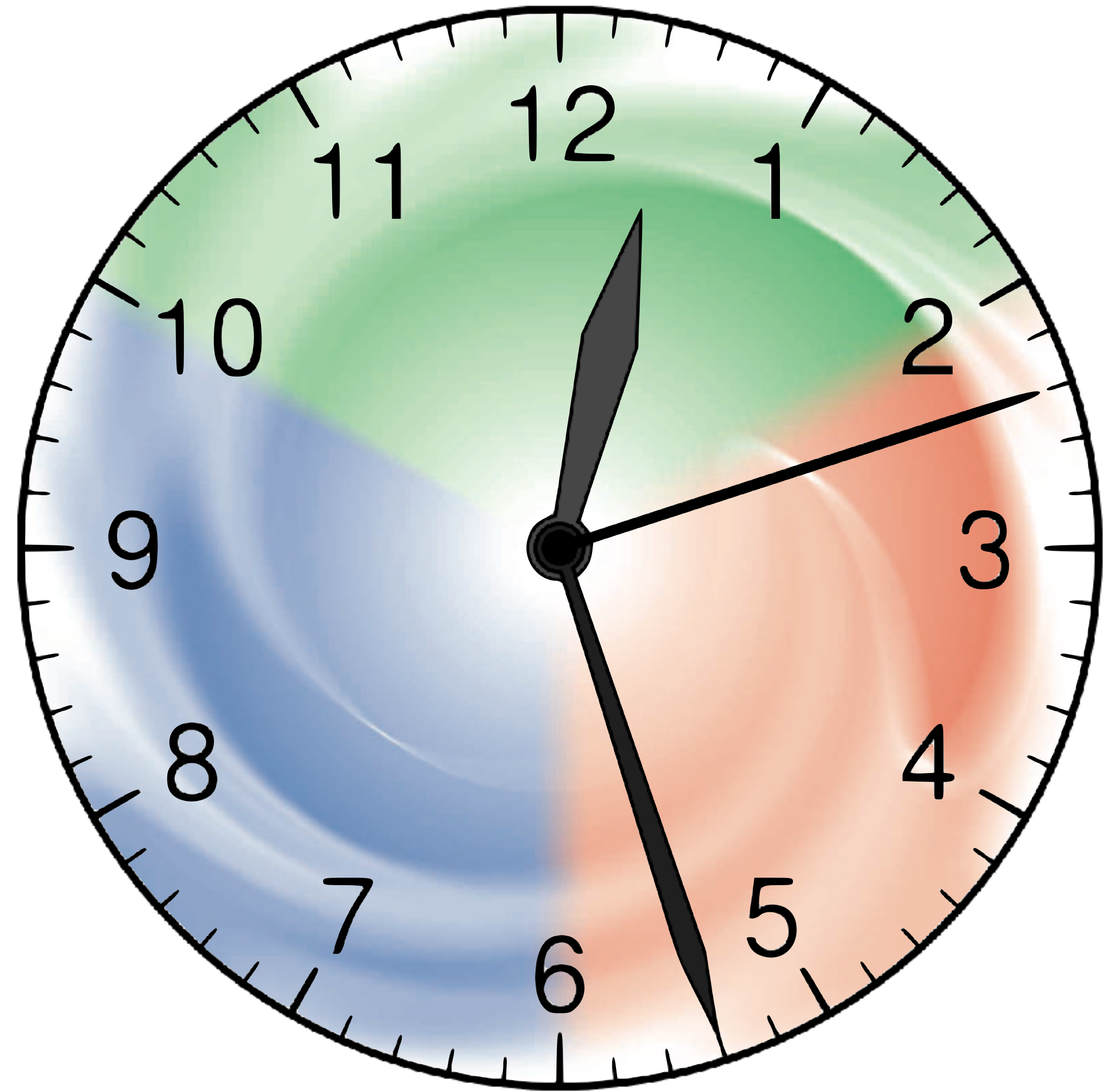


NCD applicability



NCD applicability

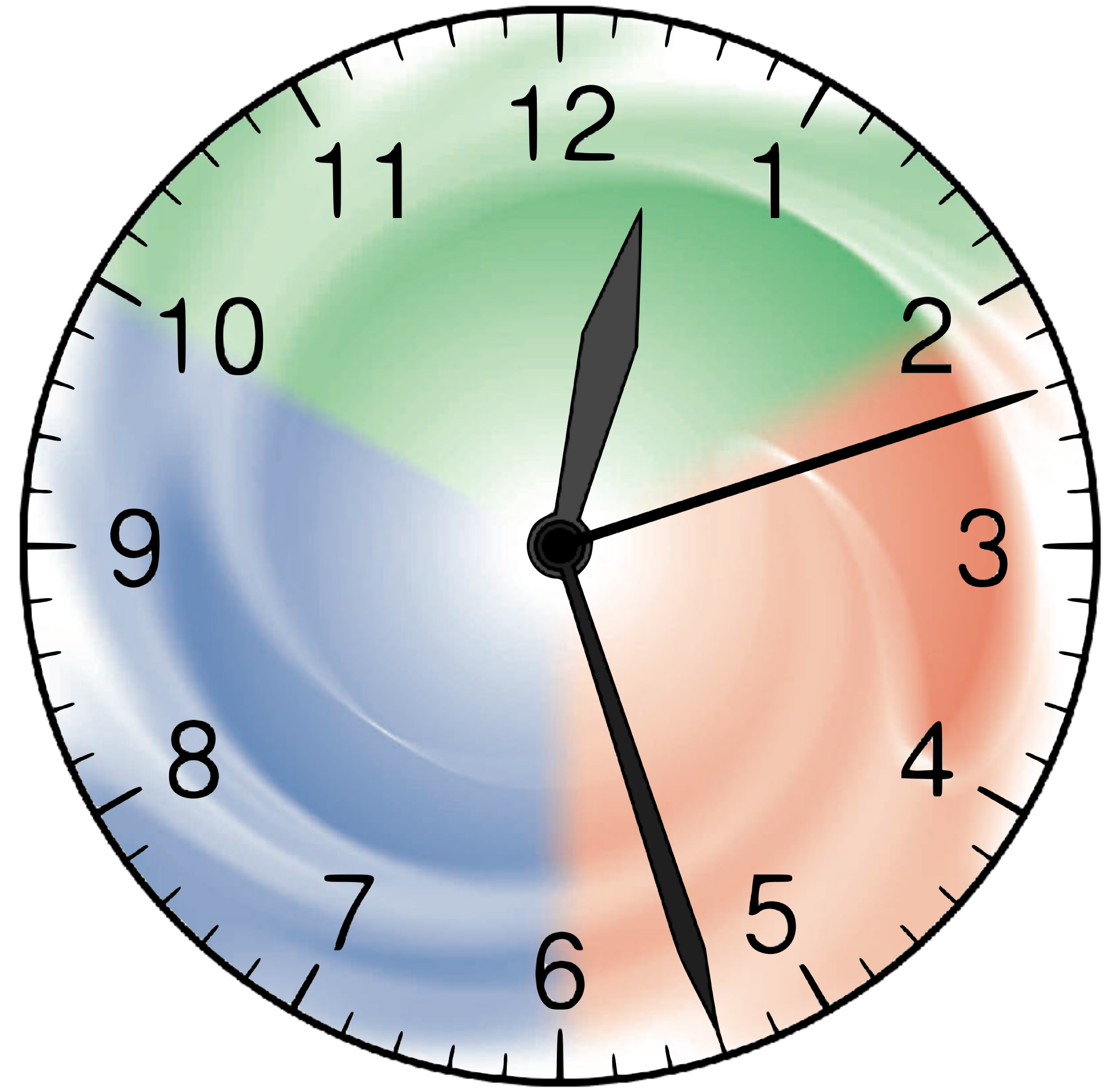
In every moment?



NCD applicability

In every moment?

Do the principles of NCD apply
in every single moment?

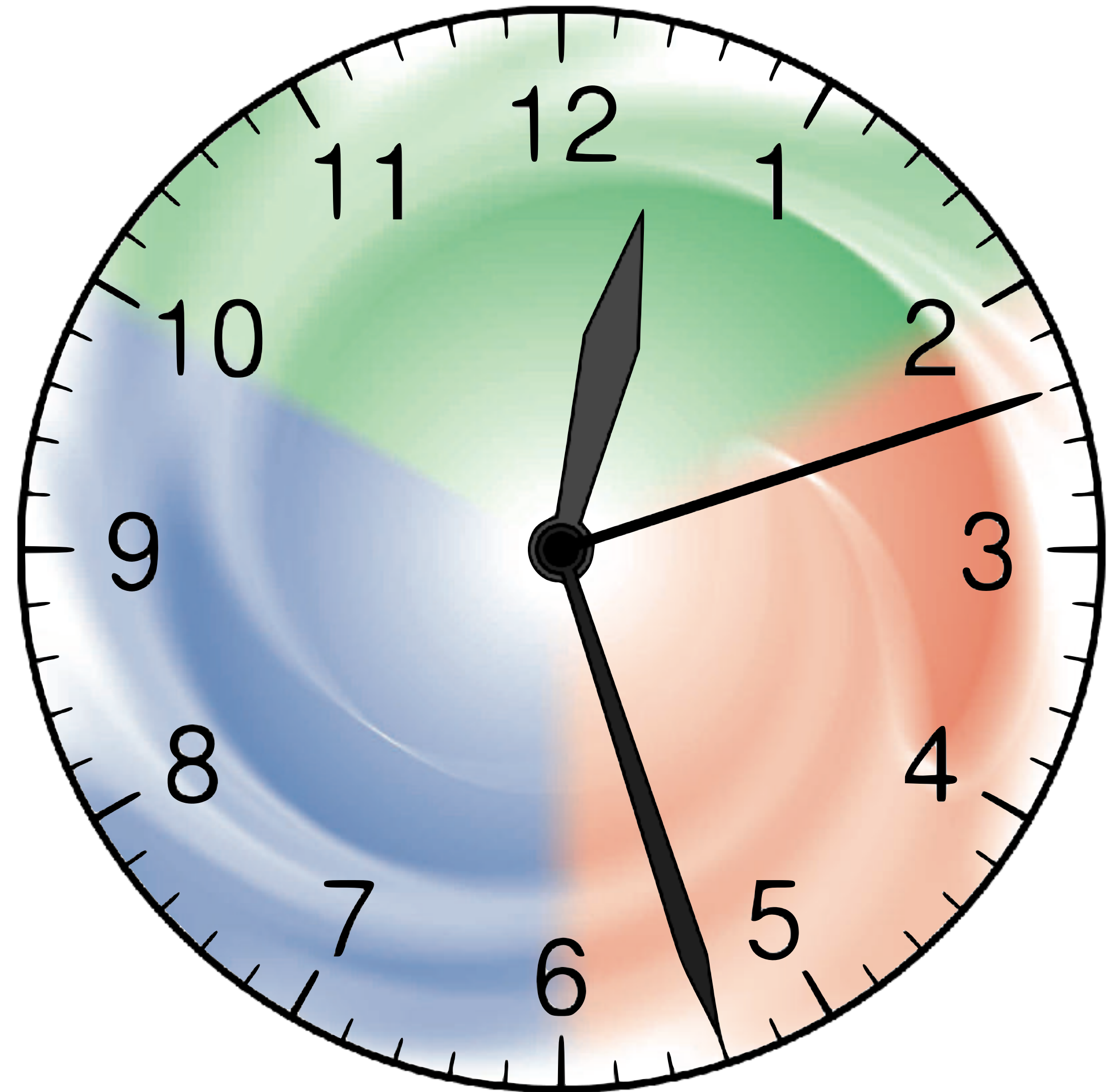


NCD applicability

In every moment?

Do the principles of NCD apply
in every single moment?

If so, what are the implications of that?
What does it mean practically?



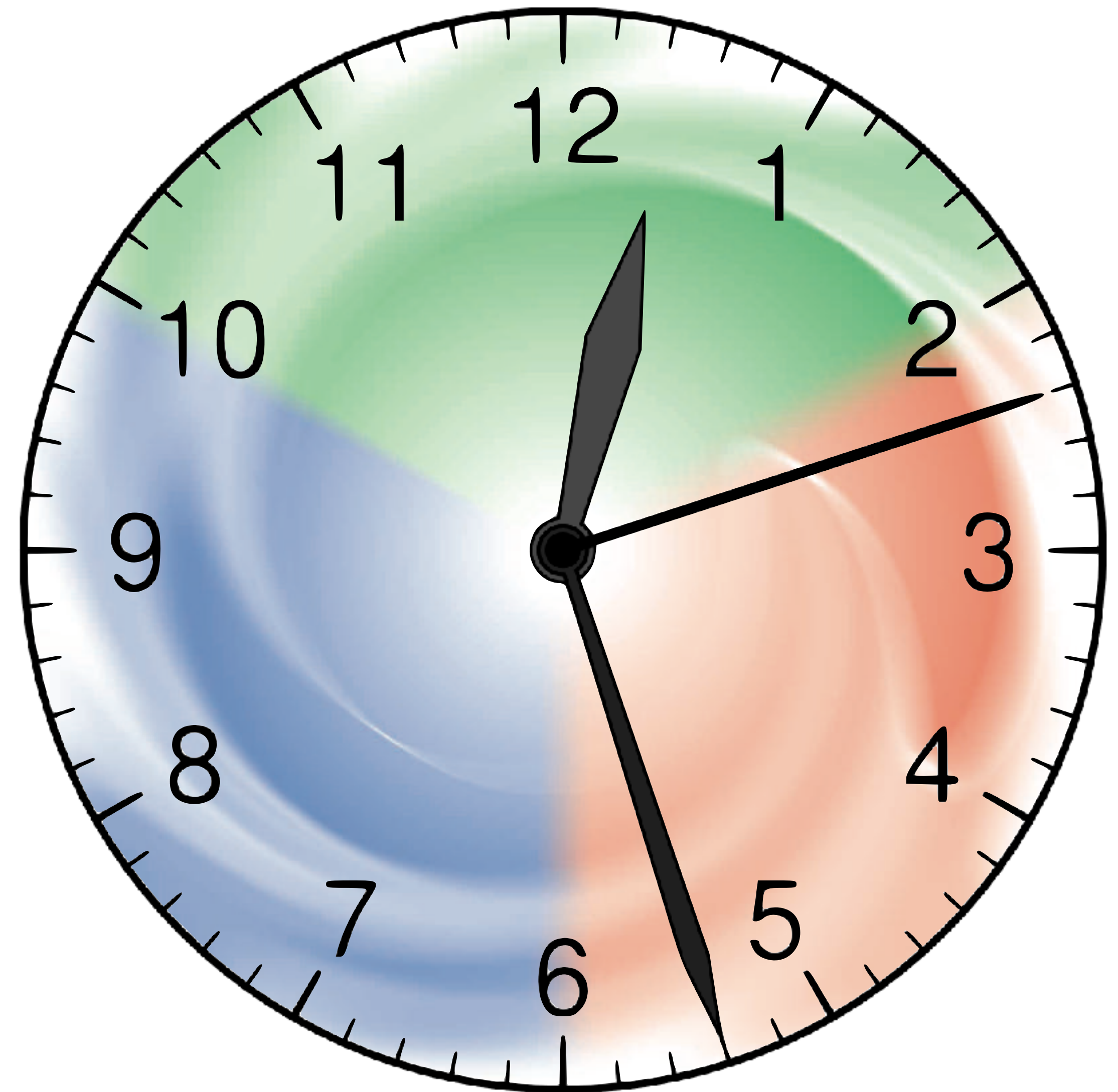
NCD applicability

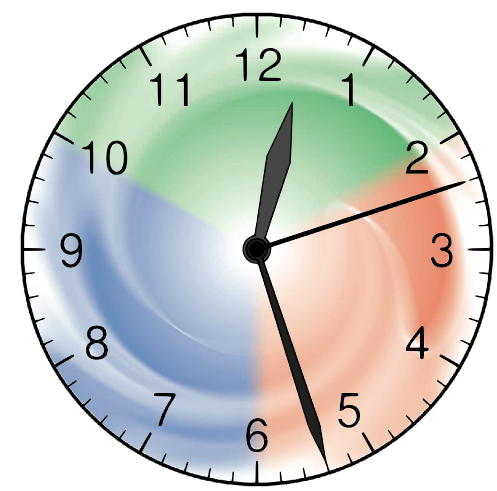
In every moment?

Do the principles of NCD apply in every single moment?

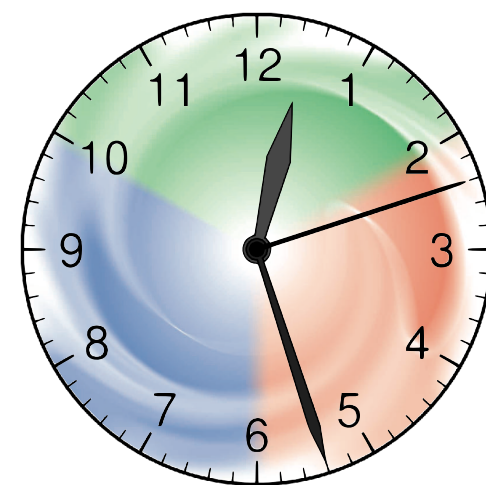
If so, what are the implications of that?
What does it mean practically?

How might an every-moment understanding of NCD principles impact the speed and consistency of improving the health of groups and individuals?



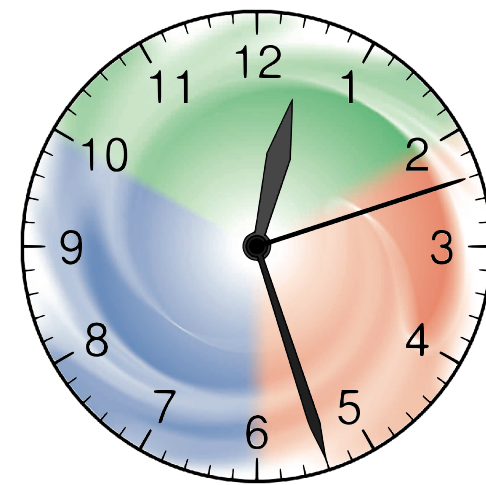


**Jesus asked them,
“Which is lawful on the Sabbath:
to do good or to do evil, to save life or to kill?”
But they remained silent.**



...for doing good or doing evil?

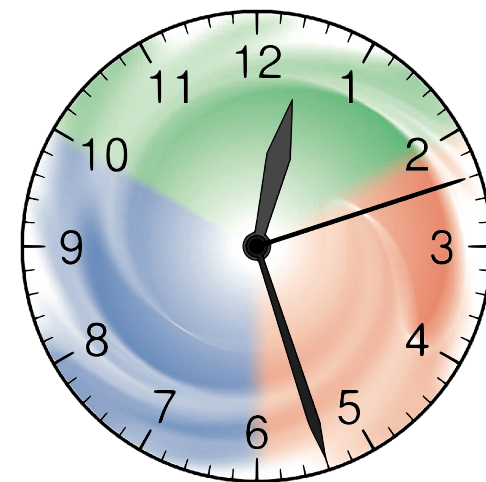
Some implications



...for doing good or doing evil?

Some implications

Living in accordance with the way of true life—the principles that govern God's Kingdom
—is a matter of life and death.

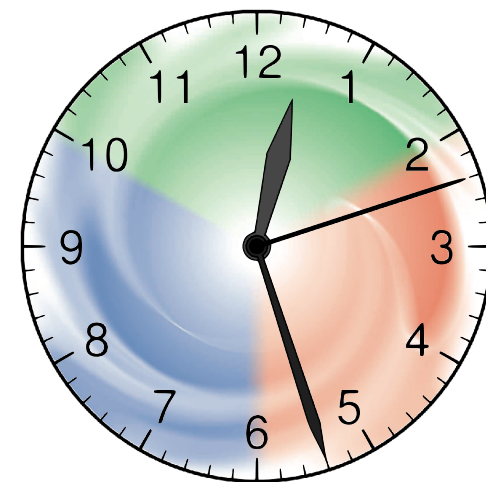


...for doing good or doing evil?

Some implications

Living in accordance with the way of true life—the principles that govern God’s Kingdom
—is a matter of life and death.

There is no “middle ground” for any human being—if you’re not doing good, you are doing evil.



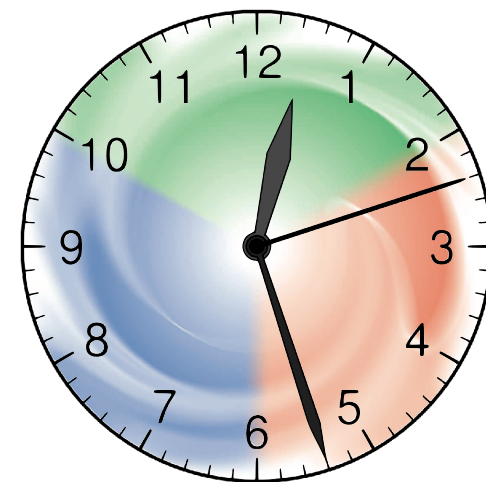
...for doing good or doing evil?

Some implications

Living in accordance with the way of true life—the principles that govern God’s Kingdom
—is a matter of life and death.

There is no “middle ground” for any human being—if you’re not doing good, you are doing evil.

The life and death dynamics of our every action and inaction apply in every moment of life.



...for doing good or doing evil?

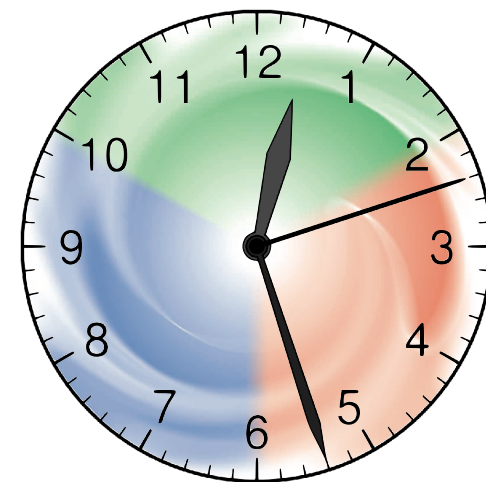
Some implications

Living in accordance with the way of true life—the principles that govern God’s Kingdom
—is a matter of life and death.

There is no “middle ground” for any human being—if you’re not doing good, you are doing evil.

The life and death dynamics of our every action and inaction apply in every moment of life.

You risk silence and retribution if you point out the every-moment implications of Kingdom principles,
but your ministry will be very limited if you don’t.



...for doing good or doing evil?

Some implications

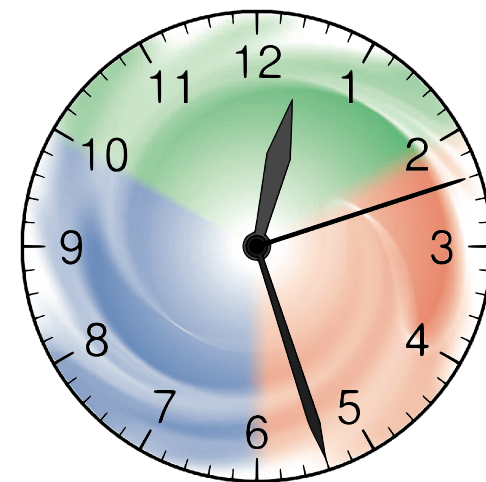
Living in accordance with the way of true life—the principles that govern God’s Kingdom
—is a matter of life and death.

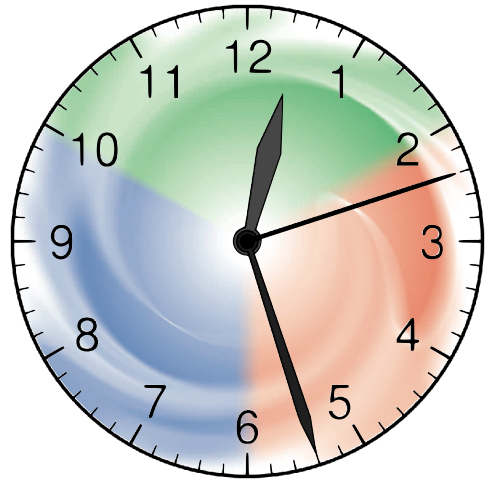
There is no “middle ground” for any human being—if you’re not doing good, you are doing evil.

The life and death dynamics of our every action and inaction apply in every moment of life.

You risk silence and retribution if you point out the every-moment implications of Kingdom principles,
but your ministry will be very limited if you don’t.

Living with that every-moment life-or-death approach is precisely why
healthy churches and healthy Christians are healthy!

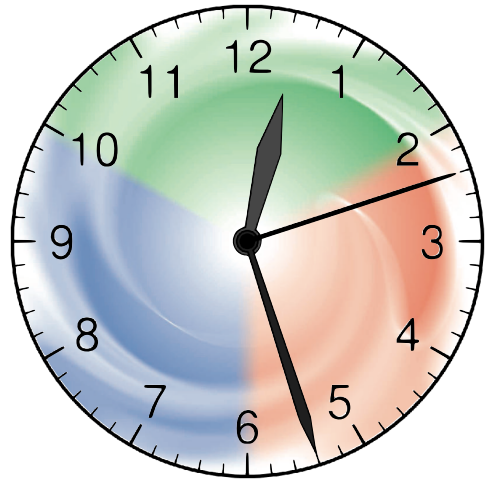




Doing good or evil

Related to each NCD Quality Characteristic



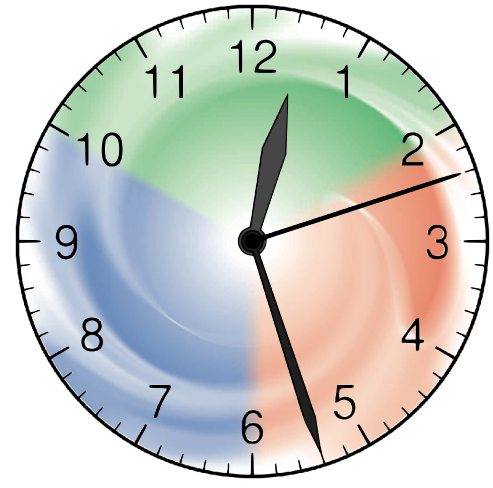


Doing good or evil

Related to each NCD Quality Characteristic

As we go through,
remember which of the
life or death
quality characteristic
statements felt,
for whatever reason,
most convicting for you
personally. Note it down.

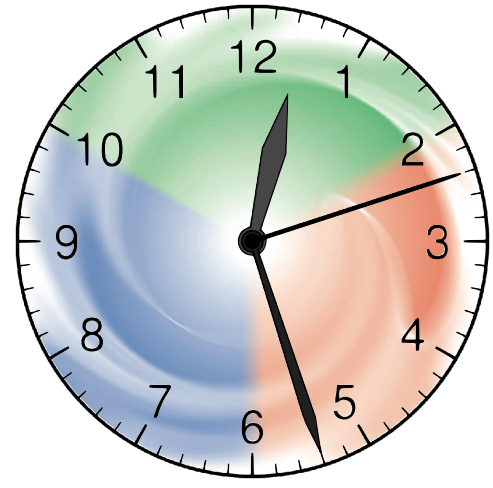




Empowerment

(empowering leadership)



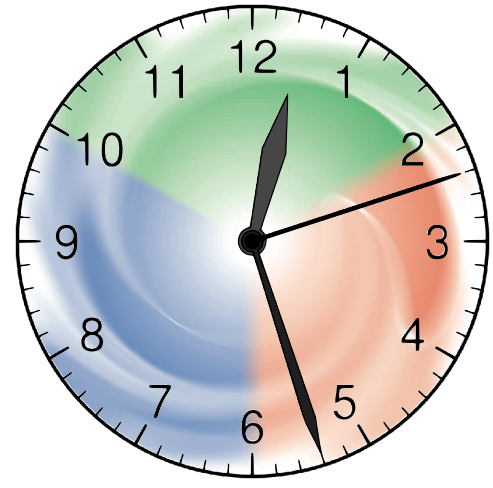


Empowerment

(empowering leadership)

In every moment,
as a human with
inescapable influence,
you are either
empowering those around you
or
oppressing them,
even if only to the smallest
degree.





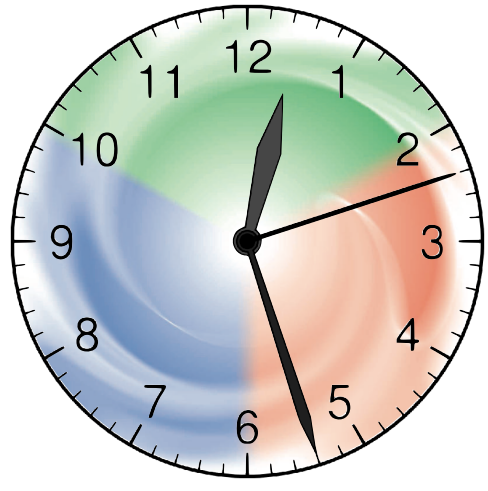
Empowerment

(empowering leadership)

In every moment,
as a human with
inescapable influence,
you are either
empowering those around you
or
oppressing them,
even if only to the smallest
degree.

Where is my power going?

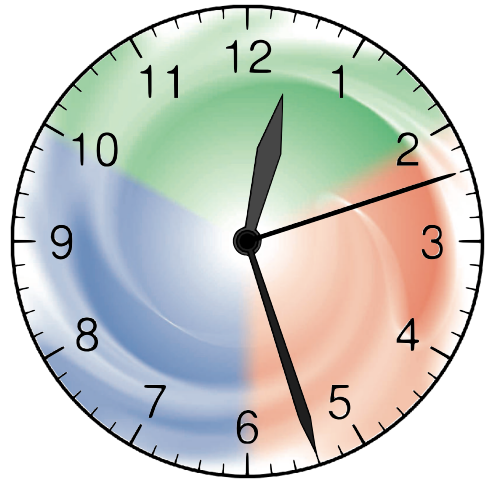




Gift-activation

(gift-based ministry)



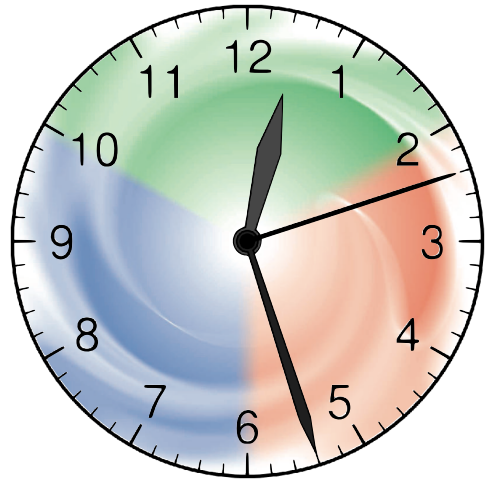


Gift-activation

(gift-based ministry)

**In every moment,
you are either helping to
activate your own
and other's gifts
or
shutting them down,
even if only to the smallest
degree.**





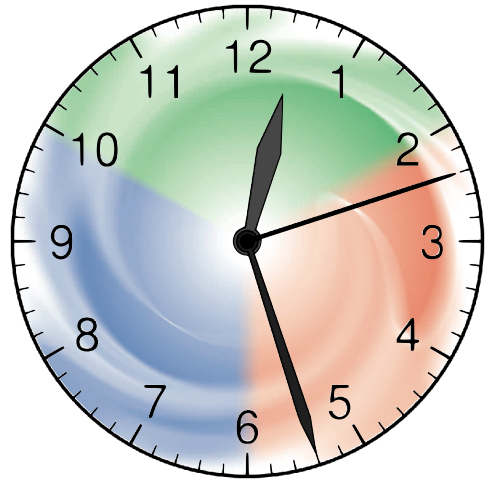
Gift-activation

(gift-based ministry)

**In every moment,
you are either helping to
activate your own
and other's gifts
or
shutting them down,
even if only to the smallest
degree.**

What is my greatest
contribution?

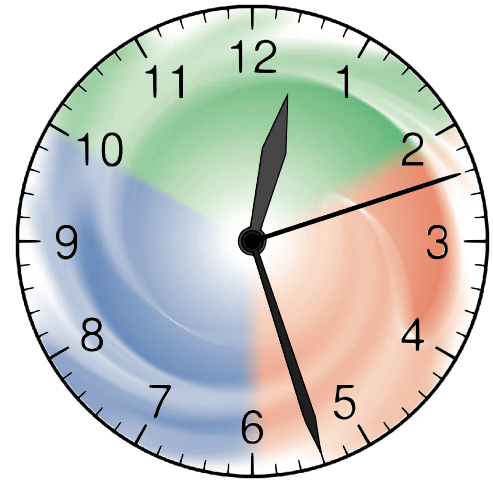




Passion

(passionate spirituality)



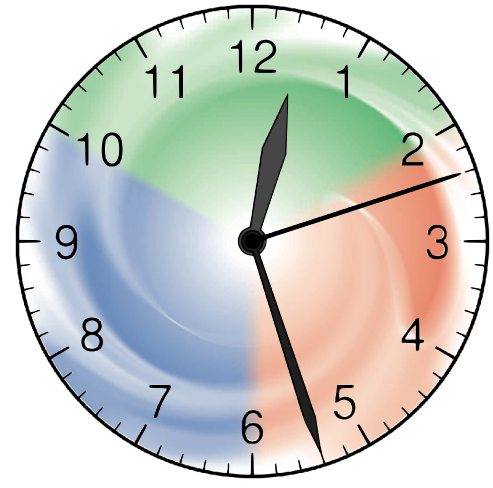


Passion

(passionate spirituality)

**In every moment,
your passion is either
being fuelled
or
snuffed out,
even if only to the smallest
degree.**





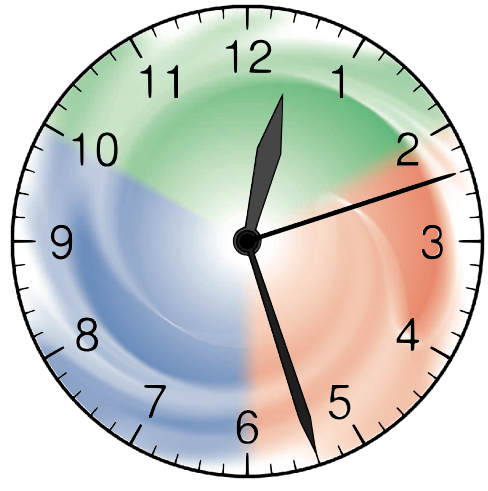
Passion

(passionate spirituality)

**In every moment,
your passion is either
being fuelled
or
snuffed out,
even if only to the smallest
degree.**

*How am I
fuelling my fire?*

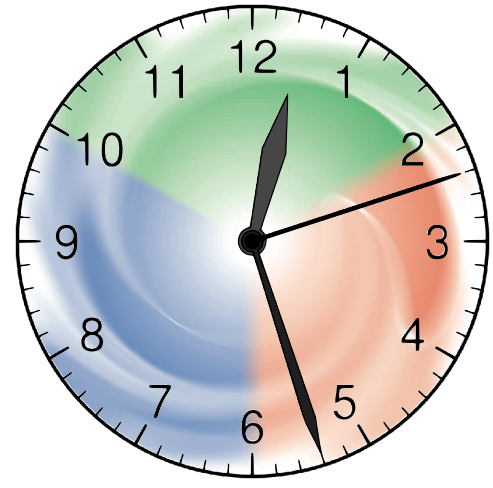




Effectiveness

(effective structures)



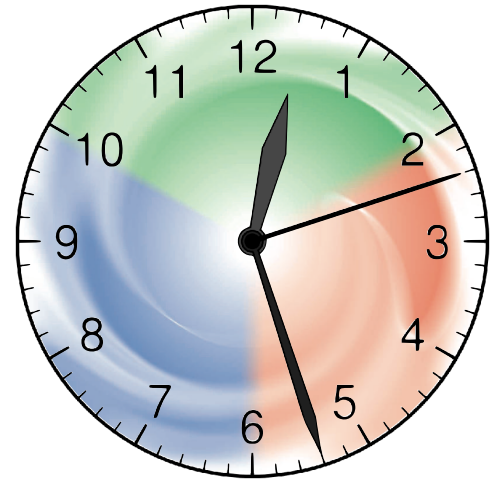


Effectiveness

(effective structures)

**In every moment,
the time, treasure, and talent
available to you is either
being used to
make the world better
or
misused, making it worse,
even if only to the smallest
degree.**





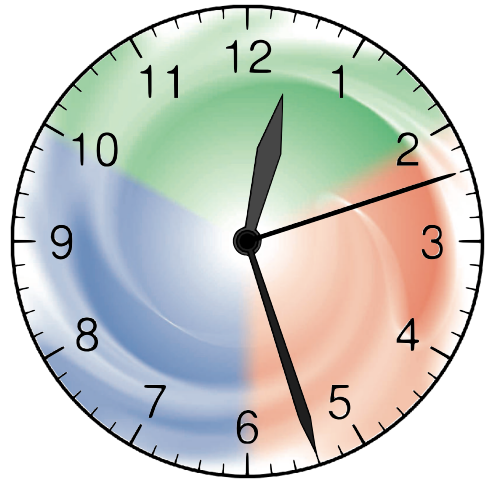
Effectiveness

(effective structures)

**In every moment,
the time, treasure, and talent
available to you is either
being used to
make the world better
or
misused, making it worse,
even if only to the smallest
degree.**

*How well am I
using all I have?*

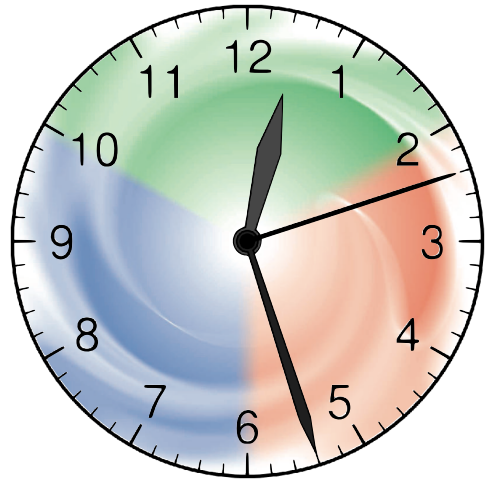




Inspiration

(inspiring worship service)



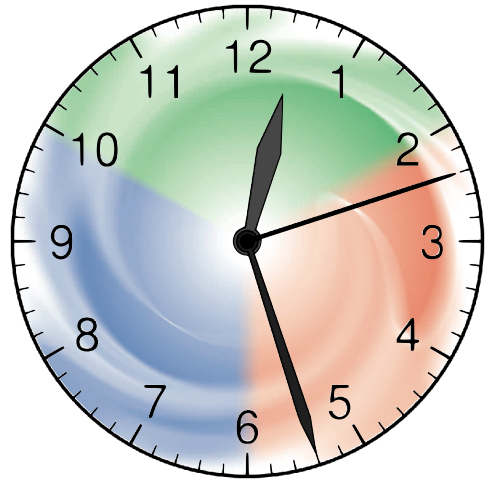


Inspiration

(inspiring worship service)

**In every moment,
you are either
inspiring those around you
or
draining life from them,
even if only to the smallest
degree.**





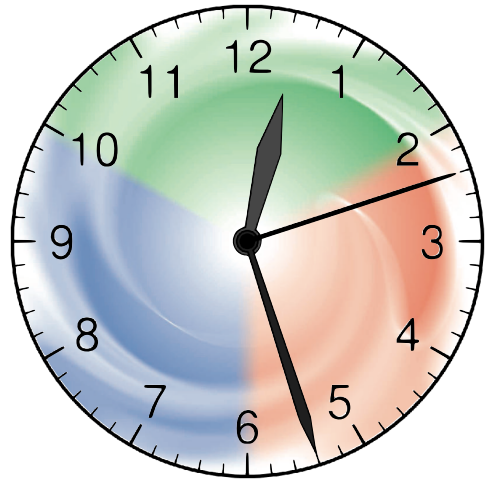
Inspiration

(inspiring worship service)

**In every moment,
you are either
inspiring those around you
or
draining life from them,
even if only to the smallest
degree.**

What happens when
I enter the room?

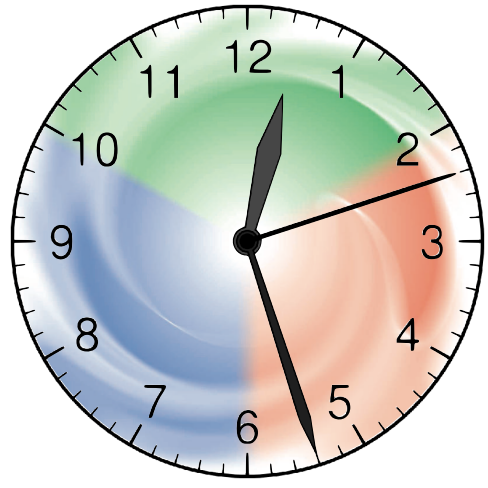




Community

(holistic small groups)



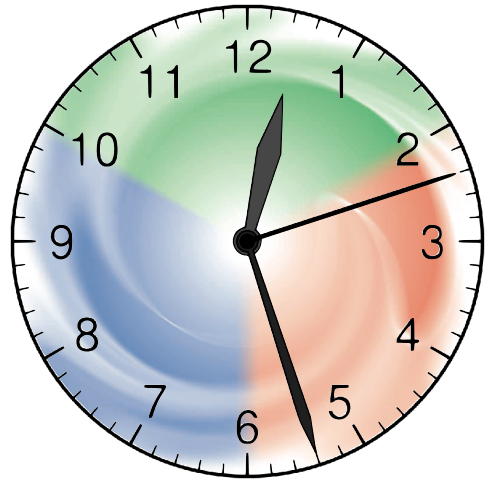


Community

(holistic small groups)

**In every moment,
you are either
bringing about common-unity
or
destroying it,
even if only to the smallest
degree.**





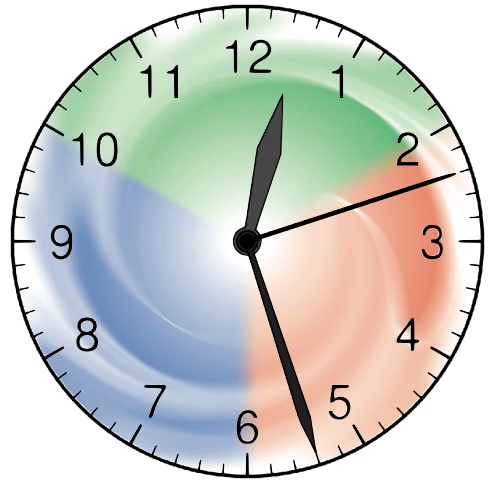
Community

(holistic small groups)

**In every moment,
you are either
bringing about common-unity
or
destroying it,
even if only to the smallest
degree.**

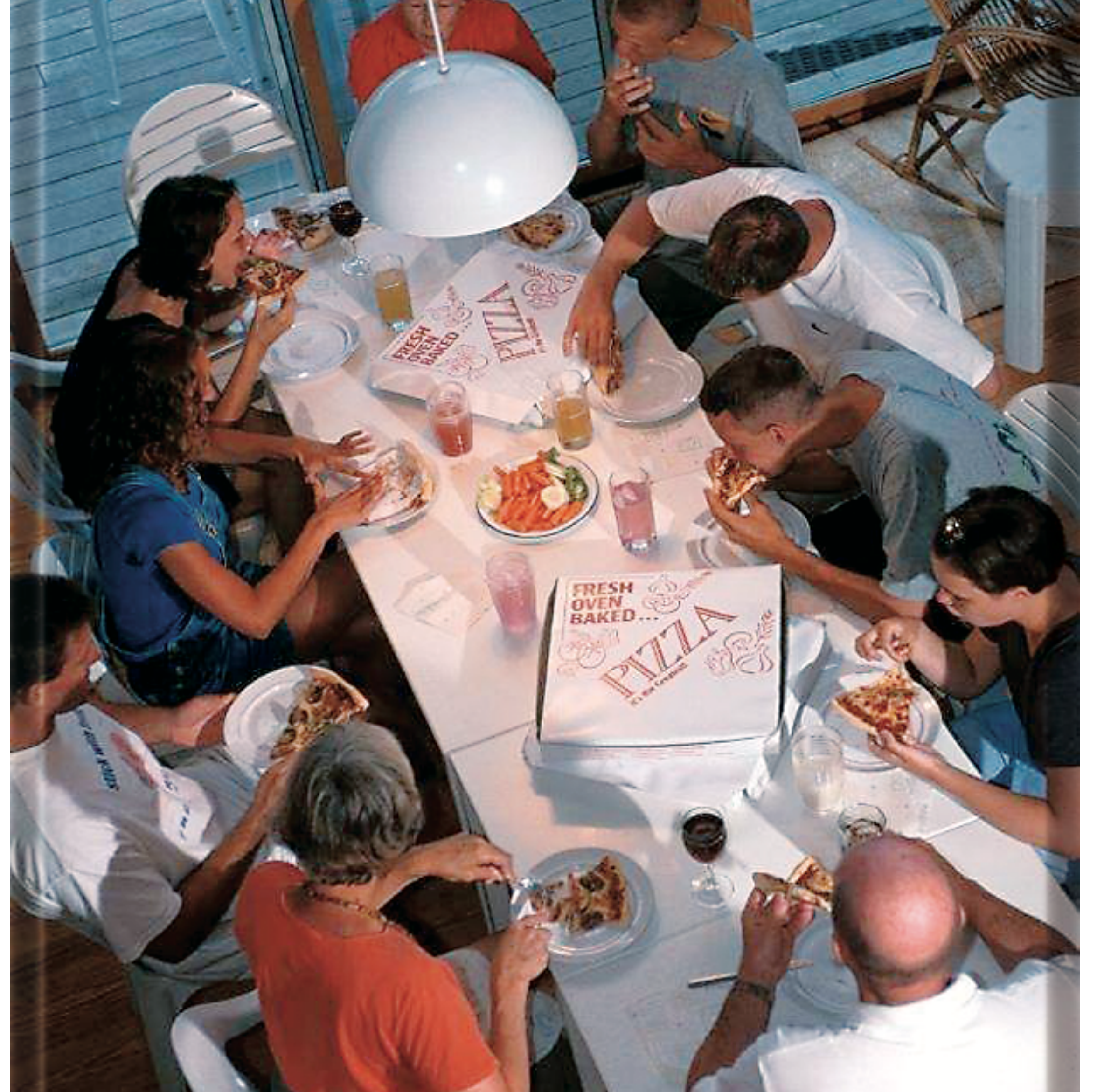
How well am I
playing with others?

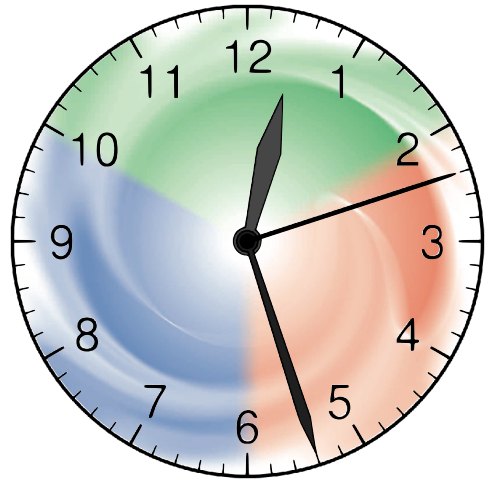




Wholeness

(need-oriented evangelism)

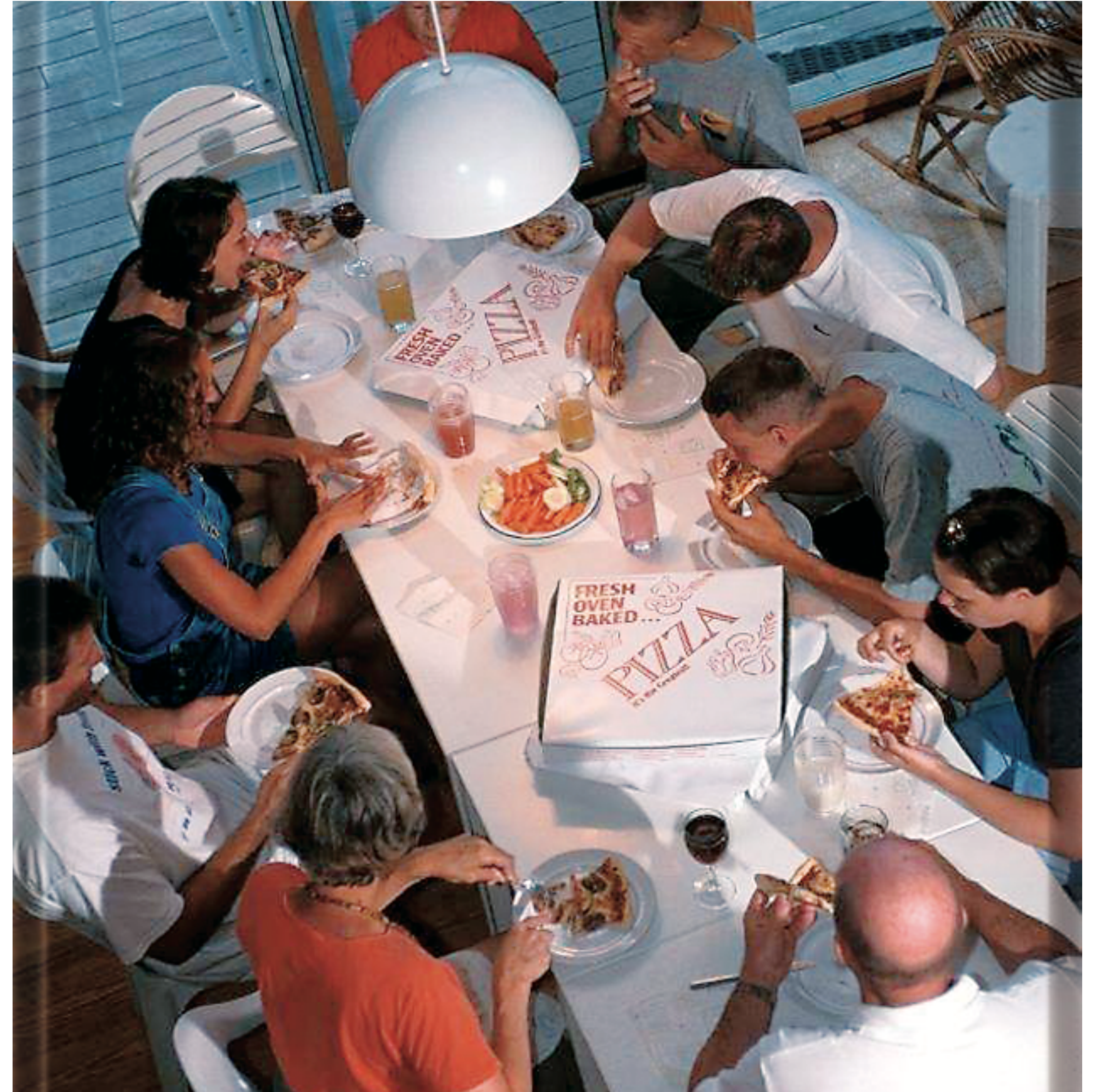


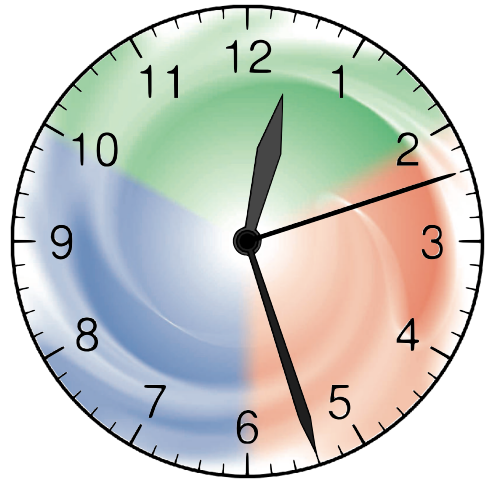


Wholeness

(need-oriented evangelism)

**In every moment,
you are either
filling your world with life
or
filling it with emptiness,
even if only to the smallest
degree.**



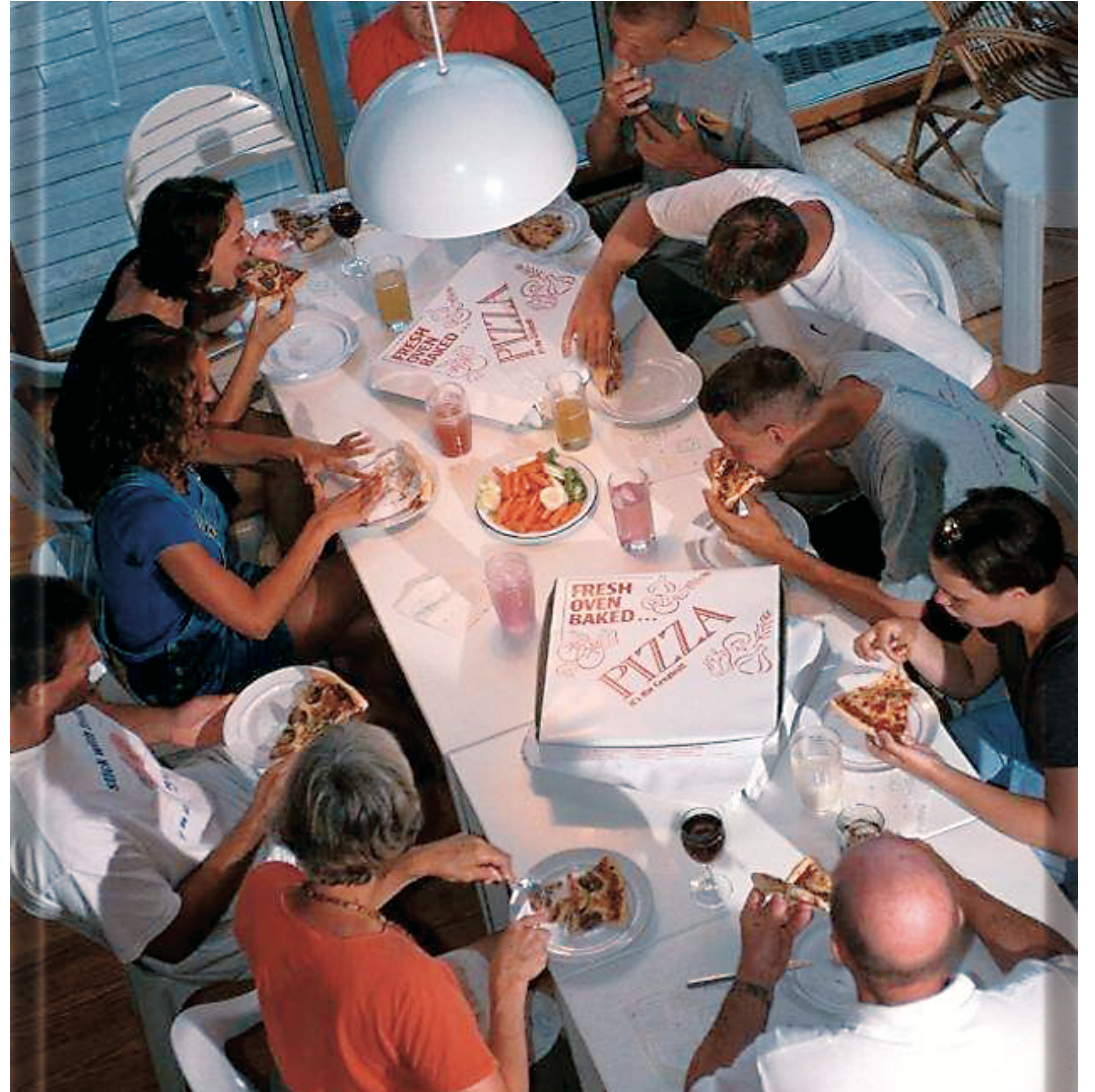


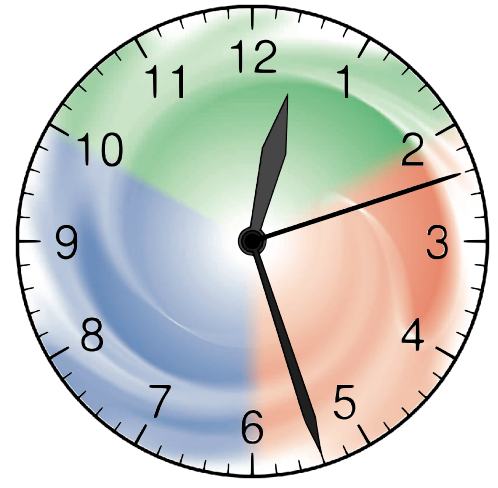
Wholeness

(need-oriented evangelism)

**In every moment,
you are either
filling your world with life
or
filling it with emptiness,
even if only to the smallest
degree.**

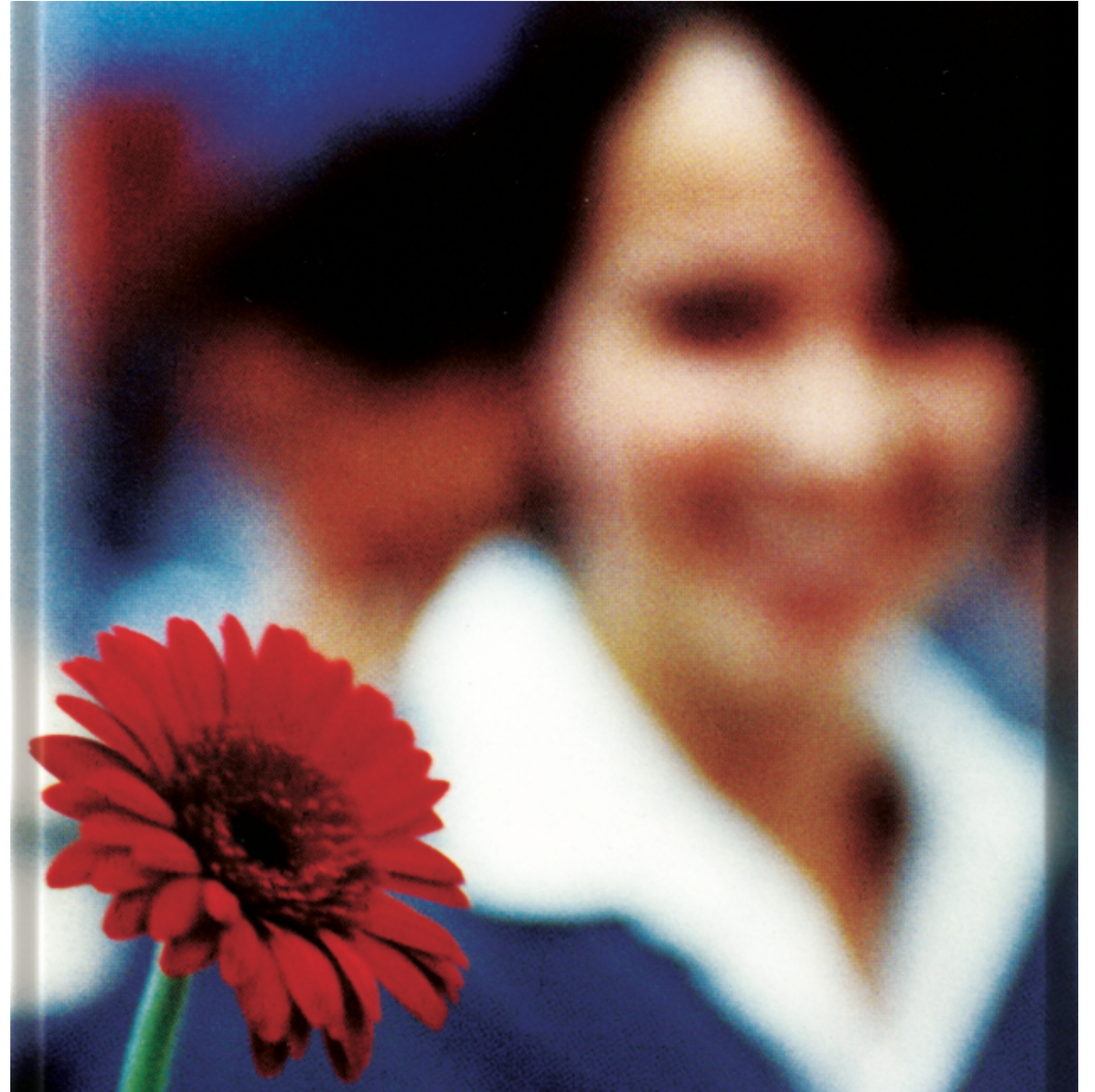
What am I filling my
life with right now?

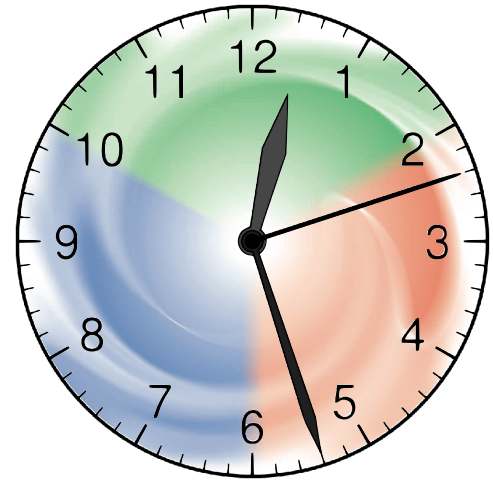




Love

(loving relationships)

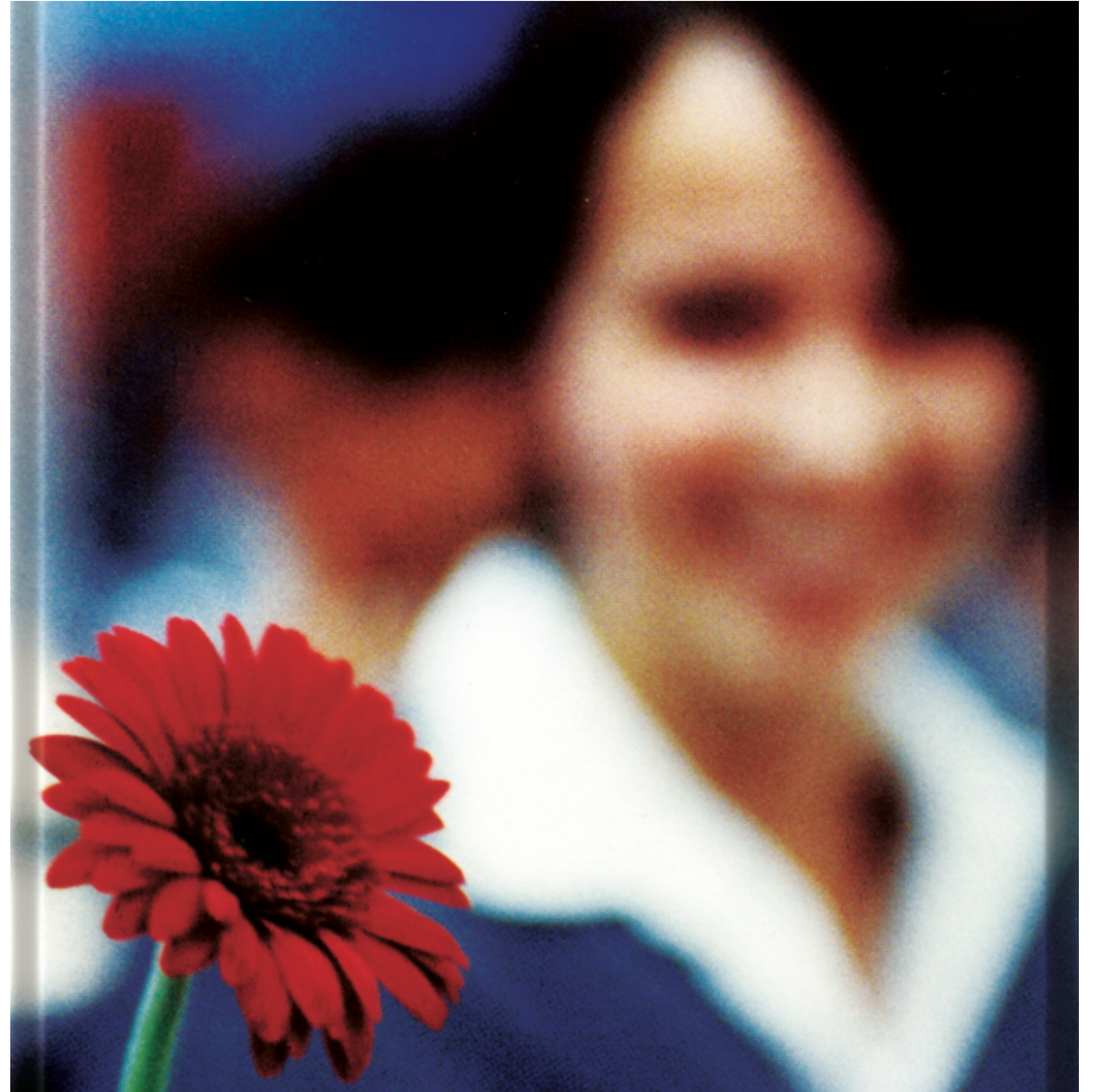


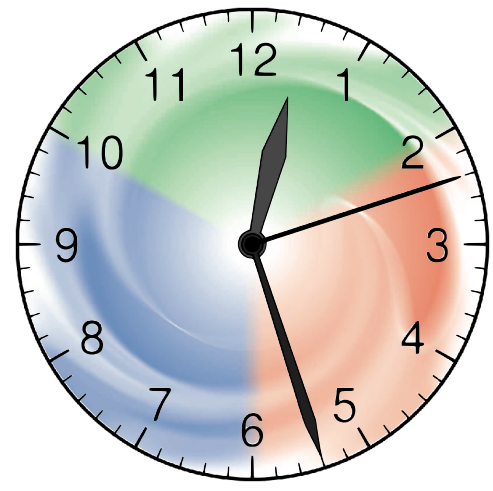


Love

(loving relationships)

**In every moment,
you are either
loving those around you
or
damaging them,
even if only to the smallest
degree.**



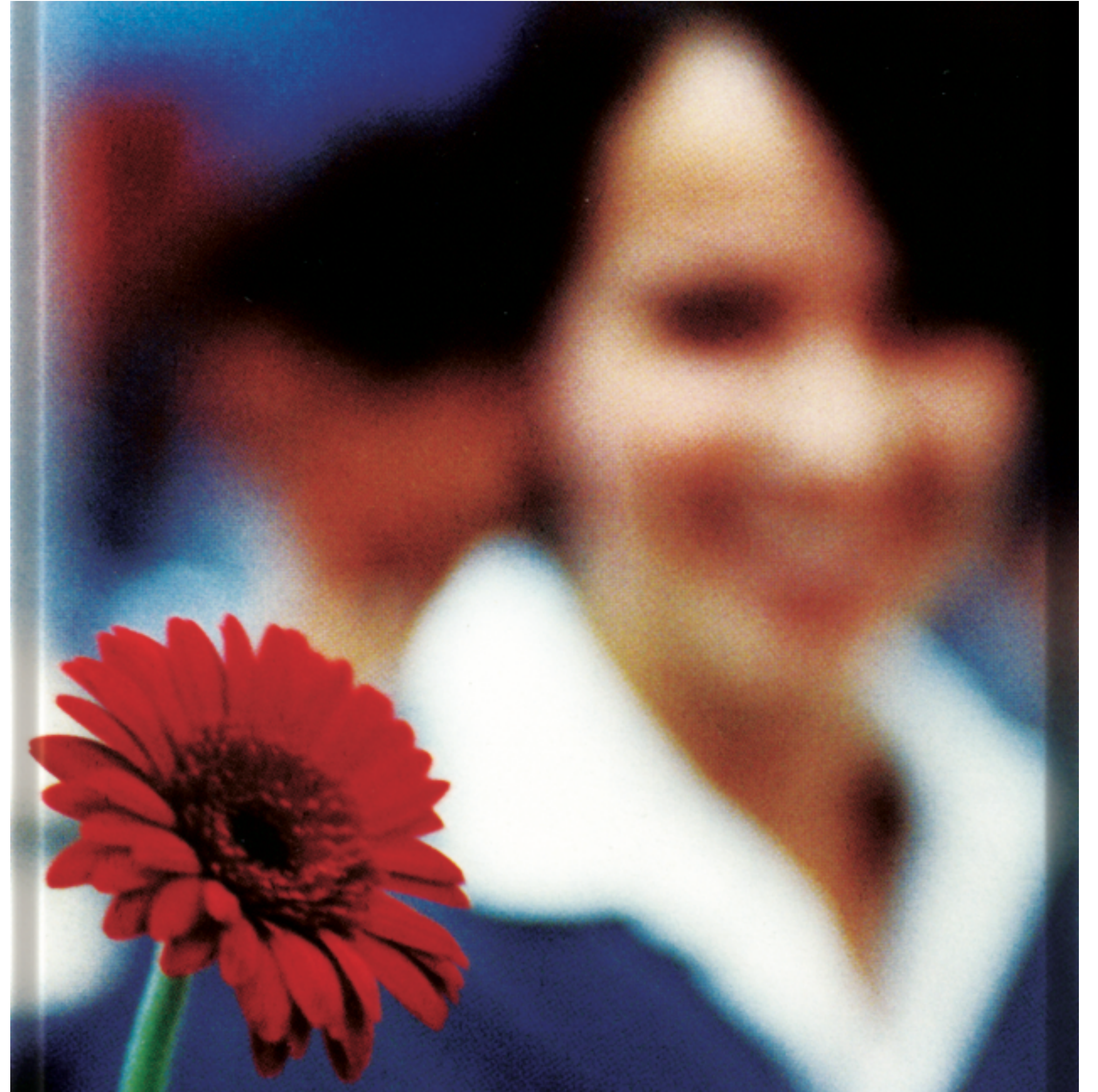


Love

(loving relationships)

**In every moment,
you are either
loving those around you
or
damaging them,
even if only to the smallest
degree.**

*What form of love
do I need to give?*



Demands and Opportunities

embracing the way of true life

Empowerment

Gift-activation

Passion

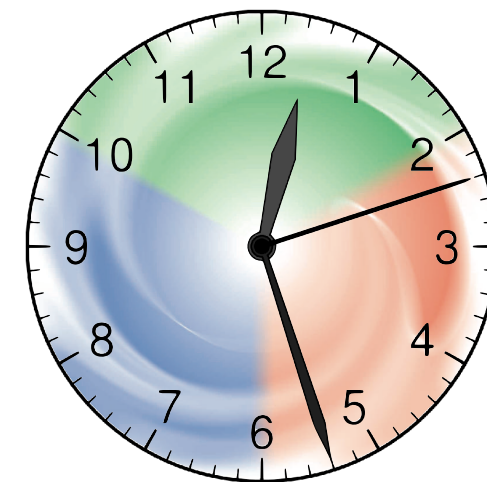
Effectiveness

Inspiration

Community

Wholeness

Love



Demands and Opportunities

embracing the way of true life

Empowerment

Gift-activation

Passion

Effectiveness

Inspiration

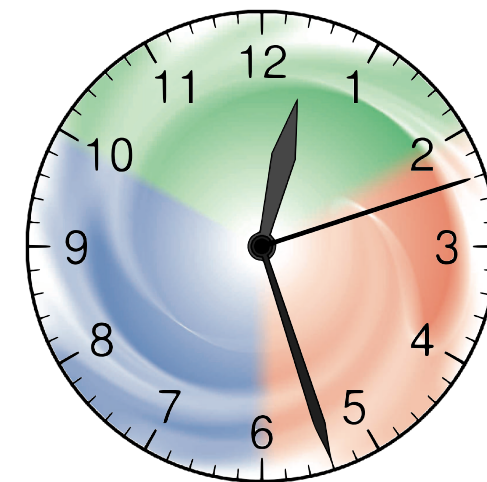
Community

Wholeness

Love

Truth

The every-moment demands
of
God's Kingdom principles



Demands and Opportunities

embracing the way of true life

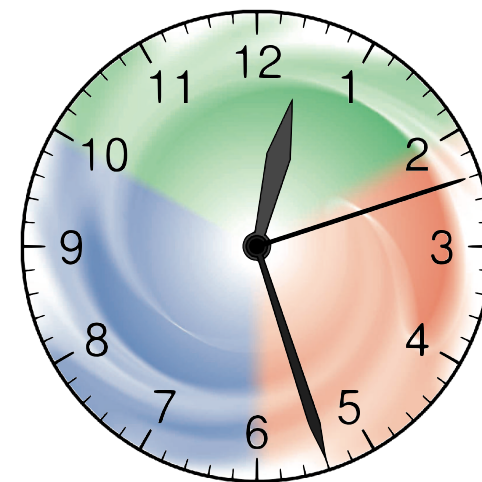
The every-moment opportunities
provided by
God's Kingdom principles

Grace

Empowerment
Gift-activation
Passion
Effectiveness
Inspiration
Community
Wholeness
Love

Truth

The every-moment demands
of
God's Kingdom principles



Demands and Opportunities

embracing the way of true life

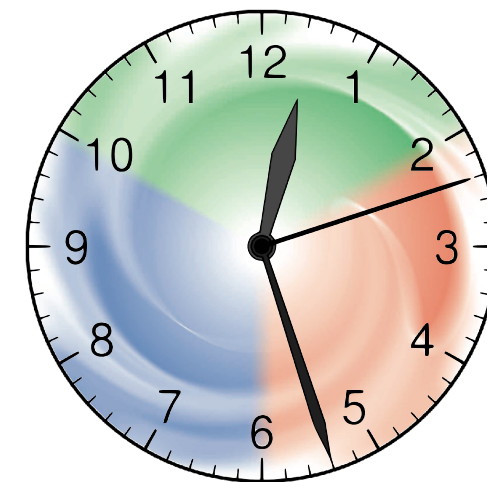
The every-moment opportunities
provided by
God's Kingdom principles

Grace

Empowerment
Gift-activation
Passion
Effectiveness
Inspiration
Community
Wholeness
Love

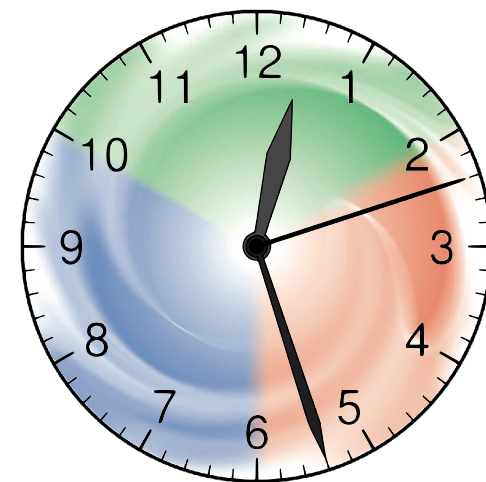
Truth

The every-moment demands
of
God's Kingdom principles



Discussion

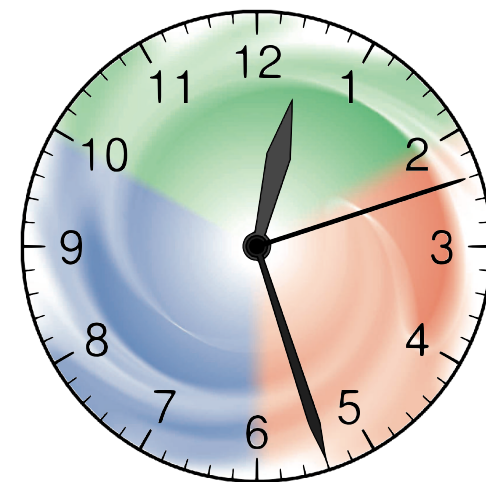
every moment in your life and ministry



Discussion

every moment in your life and ministry

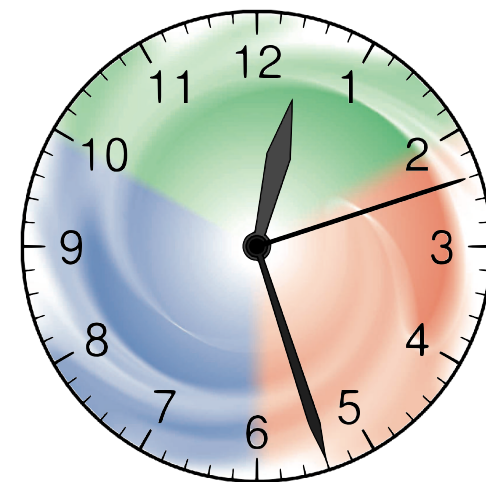
1. Which of the quality characteristic every-moment statements, for whatever reason, felt most convicting for you personally?
Why?



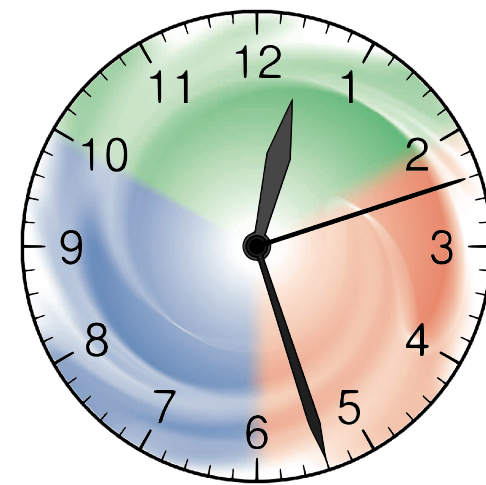
Discussion

every moment in your life and ministry

1. Which of the quality characteristic every-moment statements, for whatever reason, felt most convicting for you personally?
Why?
2. How would an every-moment mindset towards their minimum factor help the churches you work with?

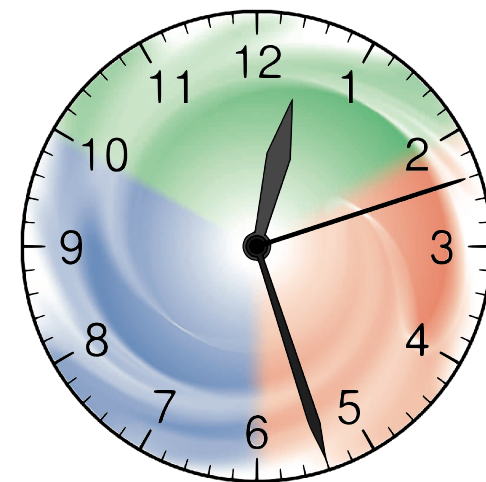


You don't "apply" NCD principles



You don't "apply" NCD principles

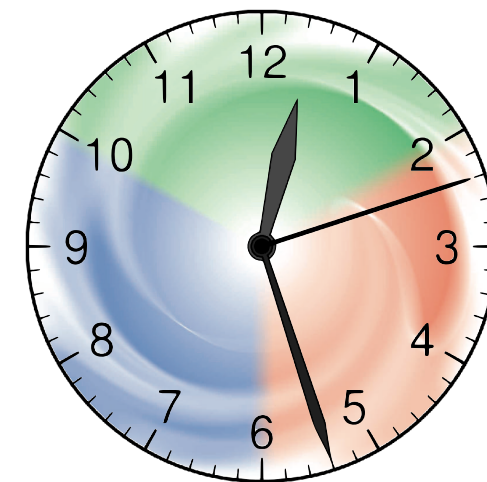
You either **defy** the principles of the way of true life
(and suffer the inevitable consequences)



You don't "apply" NCD principles

You either **defy** the principles of the way of true life
(and suffer the inevitable consequences)

or

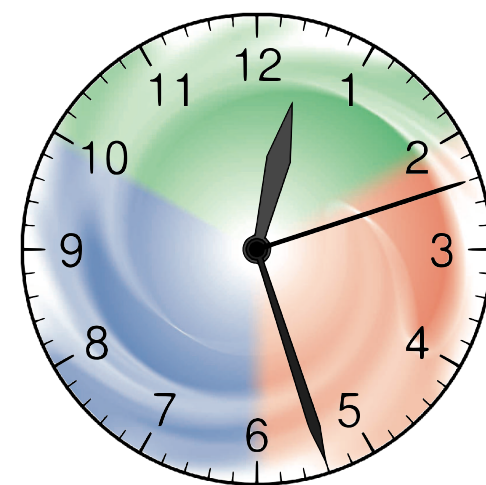


You don't "apply" NCD principles

You either **defy** the principles of the way of true life
(and suffer the inevitable consequences)

or

you **align** yourself with the way of true life
and experience life in all its fullness.





on Earth as it is in Heaven

Effectiveness

Empowerment

Love

Inspiration

Gift-activation

Passion

Wholeness

Community



on Earth as it is in Heaven

Effectiveness Empowerment Love Inspiration Gift-activation Passion Wholeness Community



destruction oppression damage suffocation stuntedness apathy erosion disintegration

on Earth as it is in Hell

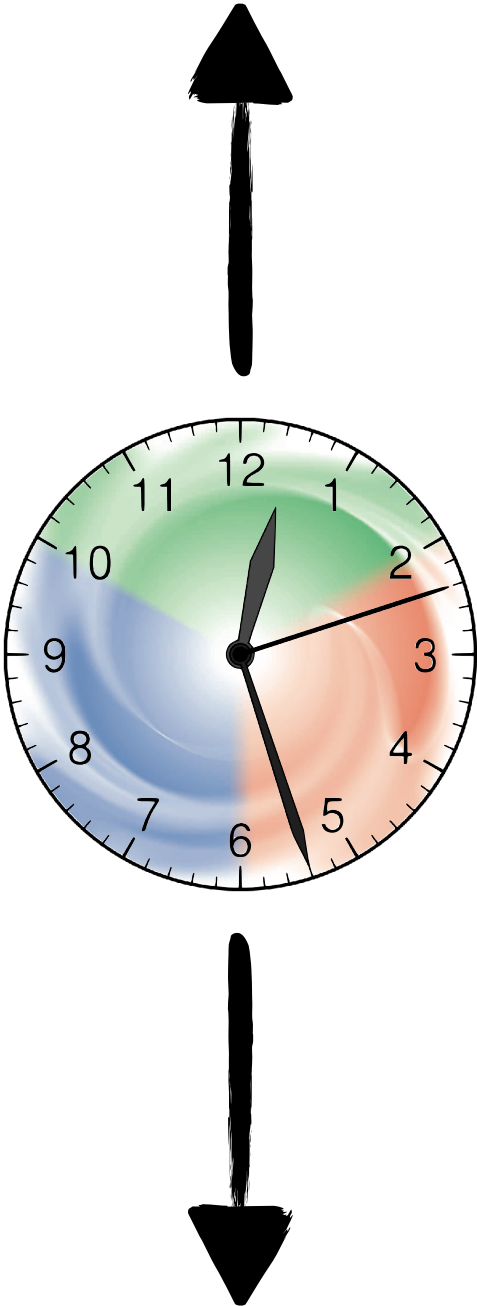
on Earth as it is in Heaven

Effectiveness Empowerment Love Inspiration Gift-activation Passion Wholeness Community



destruction oppression damage suffocation stuntedness apathy erosion disintegration

on Earth as it is in Hell



NCD Quality Characteristics: matters of life and death

thoughts and questions?

